



DANALENE

■ A SHOWCASE OF CURVES,
CRAFT AND COASTAL LUXURY

Set along Corlette's tranquil waterfront, Danalene is an award-winning architectural project that redefines coastal living. Positioned on the water's edge at Nelson Bay, this standout beachfront home is defined by its bold use of curves, creating a flowing, sculptural form that echoes the natural landscape. Every detail demanded precision, innovation, and a sharp eye for craftsmanship to complement the home's striking features.

From its curved walls to the show-stopping concrete balustrade staircase that anchors the centre of the home and expansive windows and doors framing ocean views, Danalene pushes architectural boundaries.

Throughout the home, expansive AWS floor-to-ceiling glazing systems have been carefully integrated to enhance both performance and aesthetics. Featuring Series 618 MAGNUM™ Sliding Doors, Series 549 Hinged Entry Doors

and Series 502 Residential Sliding Windows, these high-performance systems provide exceptional durability - making them ideal for Corlette's coastal environment.

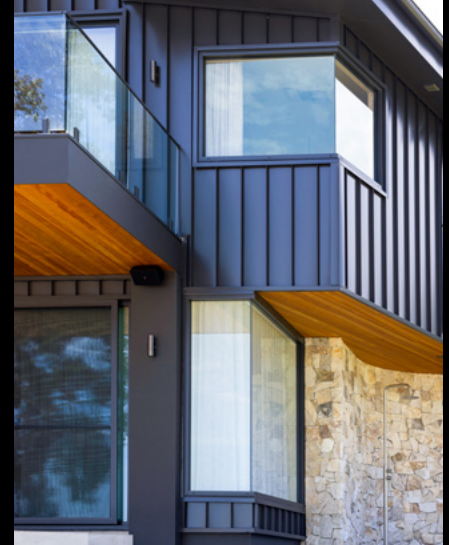
Engineered to endure corrosive sea air and powerful coastal winds, these elements also enhance the home's connection between indoors and out, framing expansive water views and welcoming abundant natural light inside. The combination of robust materials, sleek design, and precision engineering ensures both long-term resilience and a refined architectural statement.

Strategically placed Series 525 LouvreMASTER™ Louvre Windows, coupled with Series 400 Single Glazed CentreGLAZE™, invite in the fresh sea breeze and flood the gallery walkways with natural light, maximising the home's north-facing orientation. Porthole-style windows punctuate the

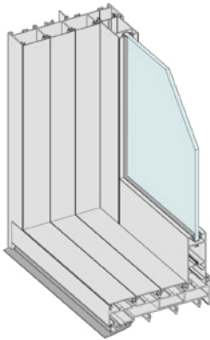


façade, adding a touch of nautical character while capturing framed glimpses of the coastline beyond.

The Danalene project showcases what is possible through collaboration between builder, architect, and suppliers. For Great Lakes Windows, it was a chance to contribute to a truly unique home—where architectural vision meets craftsmanship, and each window helps frame a life shaped by the sea.



Fabricator: Great Lakes Windows.
Architect: Torren Bell Building Design.
Builder: Custom Built Projects



❑ SERIES 618 MAGNUM™ SLIDING DOOR

- ❑ Stacking sliding door offering 2, 3 and 4 panel configurations or bi-parting doors up to 8 panels with dedicated cavity sliding option.
 - ❑ The 33mm thick stiles are ideal for extra-large doors (up to 3000mm) in high wind load areas.
 - ❑ Tested to very high-water resistance of 300Pa standard sill, 450Pa high performance sill and 660Pa cyclone sill.
 - ❑ Can be configured as a 90o corner pull-away door, or with a cavity slide option so your doors disappear into your wall.
 - ❑ Heavy door panels use double or quad wheels, the quad wheels will support panels up to 250kg.
- Maximum Panel Height*: 3000mm
Maximum Panel Width*: 2000mm
Maximum Glass Thickness: ≤24mm
Uw Range: 2.9 – 6.2
SHGC Range: 0.22 – 0.67



Established in 1983, Great Lakes Windows manufactures the high-performance, architecturally inspired range of Vantage®, Elevate™ and ThermalHEART™ products. We specialise in providing customised aluminium window and door systems for residential, architectural and commercial projects throughout NSW.

Phone: 02 6554 5277 Web: greatlakeswindows.com.au

2D & 3D CAD Files Available | For more information: awsaustralia.com.au

