



SUBURBAN HIDEAWAY

🏠 A SEAMLESS TRANSITION
BETWEEN THE INDOORS
AND OUTDOORS

The clients of Steve Laux Building Designs wanted a spacious, light-filled home in Eltham, Victoria. The aim was to use materials that would enhance the streetscape, while blending in and not being visually dominant from the roadway.

Big, expansive, unhindered access and views overlooking the pool were crucial to the design aesthetic.

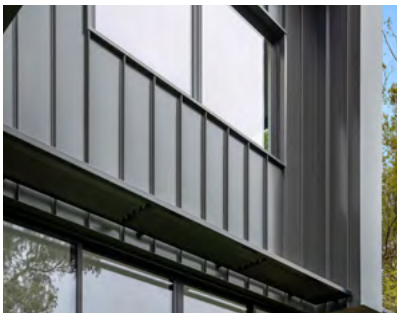
The challenge was in meeting both the design criteria and performance requirements for strength and energy. Having worked with Windows by Design for many years, the designer knew he could rely on them to bring this vision to life.

AWS | PROJECT FEATURE

The Series 618 MAGNUM™ Sliding Stacking Door was selected for this exact reason. The large panels brought a “wow feature” to the home, providing a seamless transition between the indoors and outdoors. Its versatility allows the panels to be opened wide, to make the most of summer breezes and entertaining.

Despite being close to neighbours, the positioning of windows and doors maximises the connection to nature, whilst maintaining privacy from neighbours. It also brings an abundance of natural light into the home. This interplay of natural light enhances and energises the space.

Other products used throughout the home include the Series 616 MAGNUM™ Fixed Window and the Series 616 MAGNUM™ Awning Window.



For the full feature and gallery,
visit: awsaustralia.com.au/vantage

Builder: Squaremetre Developments. **Architect:** Steve Laux Building Design. **Photographer:** San Khoshaba.



AWS SERIES 618 MAGNUM™ SLIDING DOOR

- × Get up to four panels in each direction, with the potential to span a massive 12-metres.
- × Frame a glorious view with panels up to three metres high.
- × A range of standard or high-performance sills.
- × Can be recessed into a slab for a beautiful, flush threshold.
- × Ideal for areas with high winds or heavy rain.
- × Can be configured as a 90° corner pull-away door, or with a cavity slide option so your doors disappear into your wall.

Maximum Panel Height*: 3000mm
Maximum Panel Width*: 1940mm
Maximum Glass Thickness: 24mm
SHGC Range: 0.22 - 0.67
Uw Range: 3.0 - 6.2

*Subject to individual site conditions



At Windows By Design we custom make exceptional aluminium windows and doors for residential and commercial projects in Melbourne and surrounds. We specialise in providing architecturally inspired solutions, delivering style, functionality and energy efficiency.
Phone: (03) 9585 7255 | **Web:** windowsbydesign.com.au

2D & 3D CAD Files Available | Download from specifyaws.com.au to use in your projects.

For more information on this and the rest of the Vantage® range: awsaustralia.com.au/vantage

