



SCHLICH HOUSE

■ A LIGHT-FILLED DWELLING THAT ENGAGES THE SENSES

In a street which bellows vibrant green over spring and summer and striking autumn colours in the cooler months, Schlich House was a knock-down rebuild in the inner south of Canberra.

With climate a well-known discussion to Canberrans, thermal efficiency was part of the brief. AWS ThermalHEART™ with low-E glass was chosen to ensure thermal efficiency throughout the year and meet the required energy ratings without compromising on design.

To ensure excellent thermal performance is achieved, a thermal break is incorporated into this sliding door that

separates the inside and outside elements of the frame, providing an insulator to minimise the transfer of heat or cold between the elements.

The clients wanted views of the pool from various rooms in the house. Because of this, the home was designed to wrap around a central pool in a U-shape, adding spatial drama to the space.

By deciding to use commercial frames, large window heights and widths were achieved. AWS fabricator Castle Glazing decided on the Series 852 top-hung sliding door. With the use of these commercial frames, sliding doors

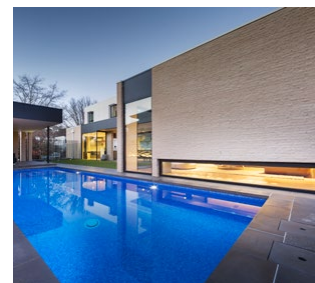
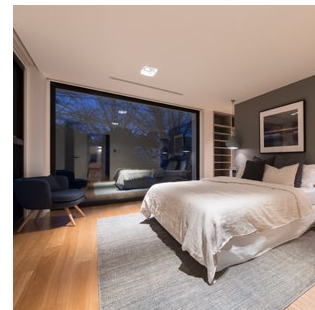
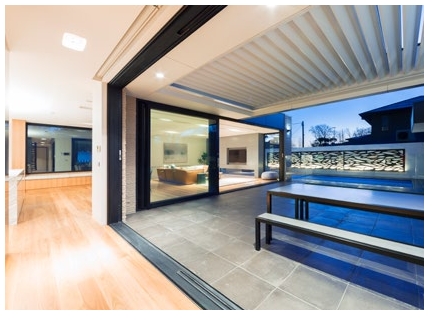
AWS | PROJECT FEATURE

to the outdoor entertaining area had to be functional and slide effortlessly. Thermally broken top-hung sliding doors running on E3 quad rollers are easy to open and close and can hold panels weighing up to 250kg. This sliding door was also installed with a flush threshold.

Ceiling to floor windows were also part of the brief, making it a light-filled dwelling that engages the senses. Series 824 FrontGLAZE™ delivers excellent thermal performance and is ideal for commercial and high-end residential applications.

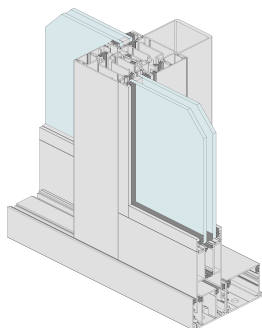
A large master bedroom window overlooks the front of the street. The clients said that the view out the window was an unexpected bonus when the large fixed panels were installed early in the construction process.

The choice of window frame finish had to complement the interior of the house. With the powder coat colour Mannex black chosen, it nicely frames the street, almost like a professional photograph.



For more information & the full gallery, visit:
thermalheart.com.au

Architect: Turco & Associates. Builder: Monarch Building Solutions Pty Ltd.
Interior Designer: Department of Design. Photography: Adam H Creations



■ THERMALHEART™ SERIES 852 TOP HUNG SLIDING DOOR

- × Series 852 sliding door is an innovative thermally broken aluminium commercial door system designed to complement the Elevate™ Commercial thermally broken CentreGLAZE™ and FrontGLAZE™ framing systems.
- × Series 852 Commercial Door system incorporated fully beaded 50mm thick heavy duty door stiles and rails designed to accept 24mm IGUs.
- × We also offer a range of snap-on glazing beads to allow us to fit thinner glass – down to 4mm thick.
- × The sliding door stiles have been designed to accept wide backset (34mm and 38mm) locks. The greater the backset the easier it is to access the key.
- × Top and bottom rails are secured to stiles with heavy duty spigot fixed to thick backing plate with high tensile bolts.



Castle Glazing offer fenestration solutions to the commercial and premium residential market from the AWS aluminium joinery stable. Our team work closely with project stakeholders to achieve contemporary, energy efficient designs with passive heating and cooling, only afforded by the use of high performance glazing architecture and the design flexibility AWS provide. Would your project benefit from a bespoke glazing solution from Castle Glazing? We service the ACT and local NSW regions. So contact us, email: info@castleglazing.com.au or call us on 02 6162 0998.



2D & 3D CAD Files Available | Download from specifyaws.com.au to use in your projects.

For more information on this and the rest of the ThermalHEART™ range: thermalheart.com.au